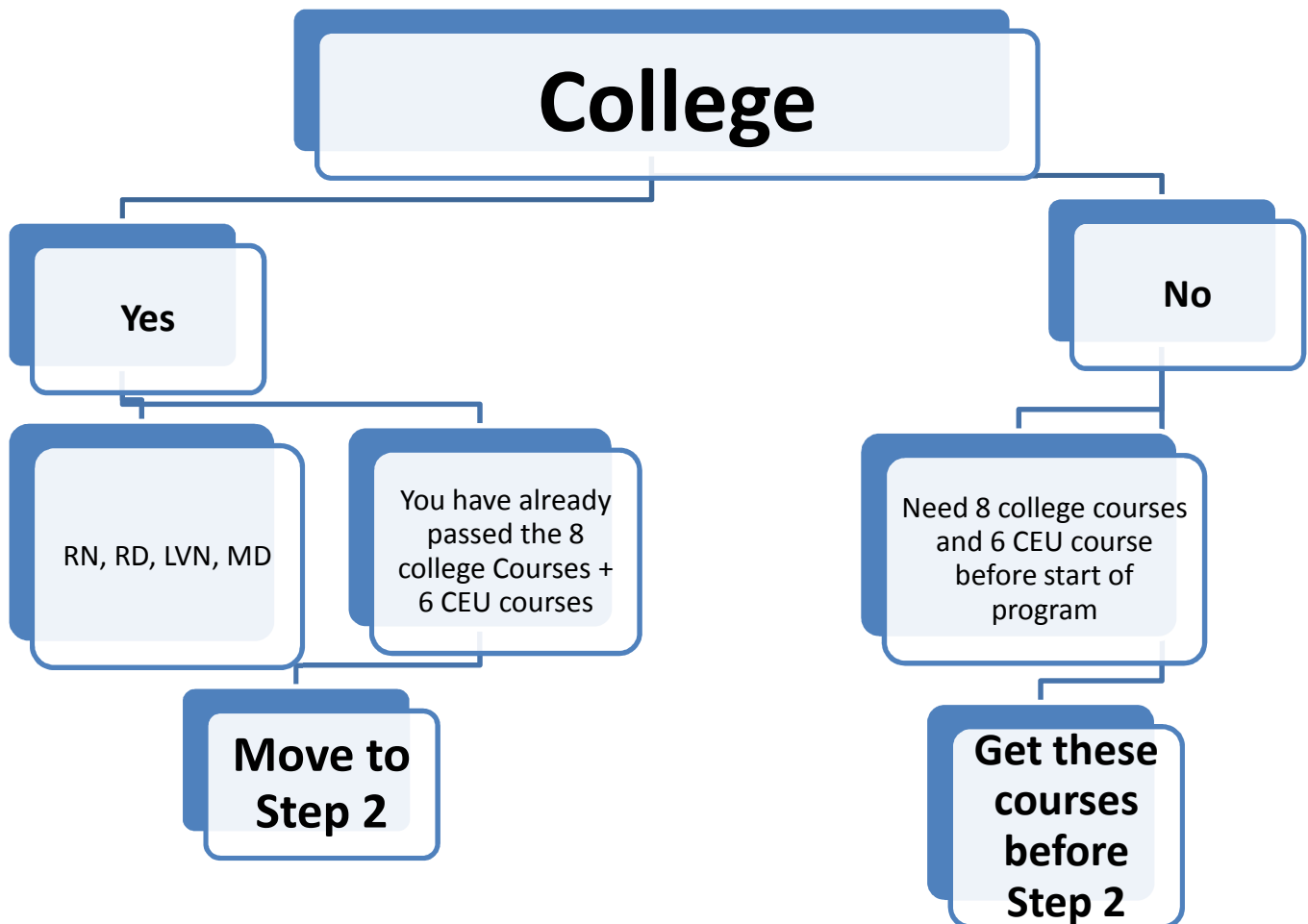


# How do I become a IBCLC lactation consultant?

## Which Pathway am I ?

**Step One: College** .... Yes or No ... *Must be yes before step TWO*



**All PATHWAY 1 interns** take the ONLINE 22 week course/class

Course starts every quarter ... (Fall-Winter-Spring-Sumer)

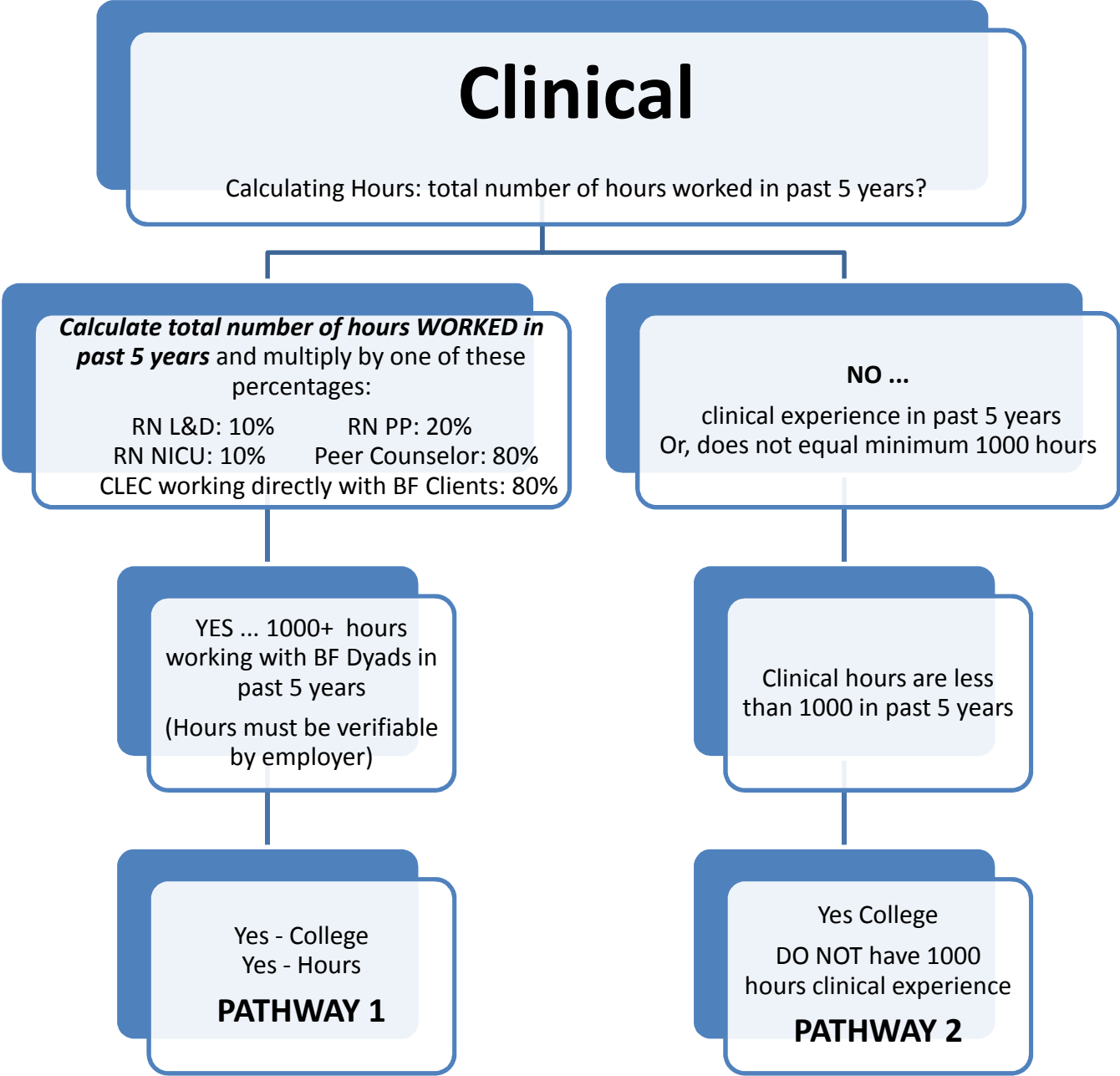
To register go to: <http://extension.ucsd.edu> and search for lactation

For additional information: [www.breastfeeding-education.com](http://www.breastfeeding-education.com)

# How do I become a IBCLC lactation consultant?

## Which Pathway am I ?

### Step TWO: Clinical ... Yes or No



All **PATHWAY 2 interns** must have all of the college requirements, the CLEC course, and a clinical site identified before applying to Consultant Course

ONLINE 33 week Lactation Consultant HYBRID course/class  
Course starts every year Fall Quarter only !

To register go to: <http://extension.ucsd.edu> and search for lactation  
For additional information: [www.breastfeeding-education.com](http://www.breastfeeding-education.com)