

# EARN YOUR DEGREE IN AS LITTLE AS 12 MONTHS

GRAND CANYON UNIVERSITY has created a pathway to faster and more affordable degrees for educators by accepting and applying up to 9 BTSA/Induction program credits towards our College of Education master's programs.

To apply the transfer units, GCU staff will verify completion of a California clear credential. If they are unable to verify a California clear credential, the student must submit verification of their completion of a CTC-approved BTSA program before transfer credits are applied.

## APPLICABLE PROGRAMS INCLUDE:

### MASTER OF ARTS IN CURRICULUM AND INSTRUCTION

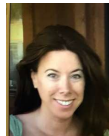
- 9 credits on transfer,\* 23 credits remaining
- 8 classes remaining
- 18% off tuition scholarship\*\* opportunity
- Complete your program in 12 months†

### MASTER OF ARTS IN READING, TESOL, INSTRUCTIONAL TECHNOLOGY OR AUTISM SPECTRUM DISORDERS

- 6 credits on transfer,\* 26 credits remaining
- 9 classes remaining
- 18% off tuition scholarship\*\* opportunity
- Complete your program in 14 months†

GRAND CANYON  
UNIVERSITY®

FIND YOUR PURPOSE



### FOR MORE INFORMATION, CONTACT:

Lisa De Angelis  
602-247-4713  
[lisa.deangelis@gcu.edu](mailto:lisa.deangelis@gcu.edu)  
<http://www.gcu.edu/c/lisa.deangelis>

\*The total number of transfer credits are 6-9. Those in year one induction can still be enrolled but will not receive the credit transfer until the clear credential is complete.

\*\*MOU 6656: This scholarship is only valid for those applicants who reside outside of Arizona or Texas, are participating in a GCU College of Education or Secondary Education Emphasis master's degree program, and who submit a completed application to start their program during the month of February 2021. This offer only applies to online and evening programs.

†Students can shorten this time to completion average by not taking breaks. GCU's counseling staff will provide all options prior to enrollment.

Please note, not all GCU programs are available in all states and in all learning modalities. Program availability is contingent on student enrollment. Grand Canyon University is regionally accredited by the Higher Learning Commission 800-621-7440; <http://hlcommission.org/>. Important policy information is available in the University Policy Handbook at <https://www.gcu.edu/academics/academic-policies.php>. The information printed in this material is accurate as of JANUARY 2021. For the most up-to-date information about admission requirements, tuition, scholarships and more, visit [www.gcu.edu](http://www.gcu.edu) ©2021 Grand Canyon University 21COEE0034